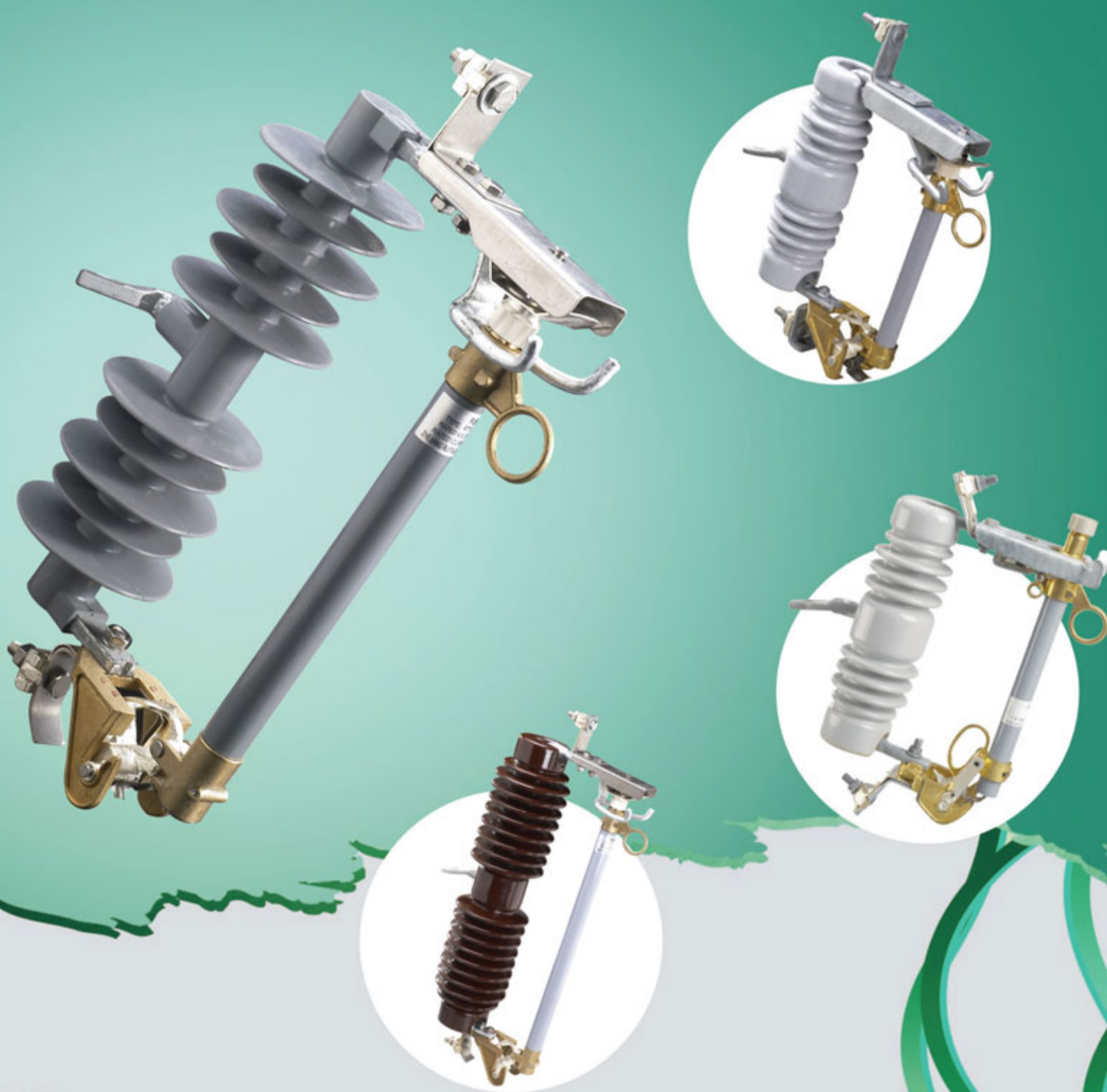




Professional Manufacturer CROP® in High Voltage Products Field

Drop-out fuse cutout and load switching fuse cutout are of outdoor used high voltage protective device. To be connect wing incoming feeder of distribution transformer or distribution lines it mainly protect trans former or lines from short circuit and overload, and on/off loading current, Drop-out fuse cutout is comp-osed of insulat insulatou supports and fuse tube, static contacts is fixed on two sides of insulator support and moving contact is installed on two ends of fuse tube. Fuse tube is composed of inside arcextinguishing tube, outer phenolic compound paper tube or epoxy glass tube. Load switching fuse cutout provides enfouedelastic auxiliary contacts and arcextinguishing enclosure for switching on/off loading current.



C High-voltage isolate switch



High Voltage Drop-out Fuse Cut-out



C300 Fuse cut-out High voltage series

• 熔断器 Fuse cutout

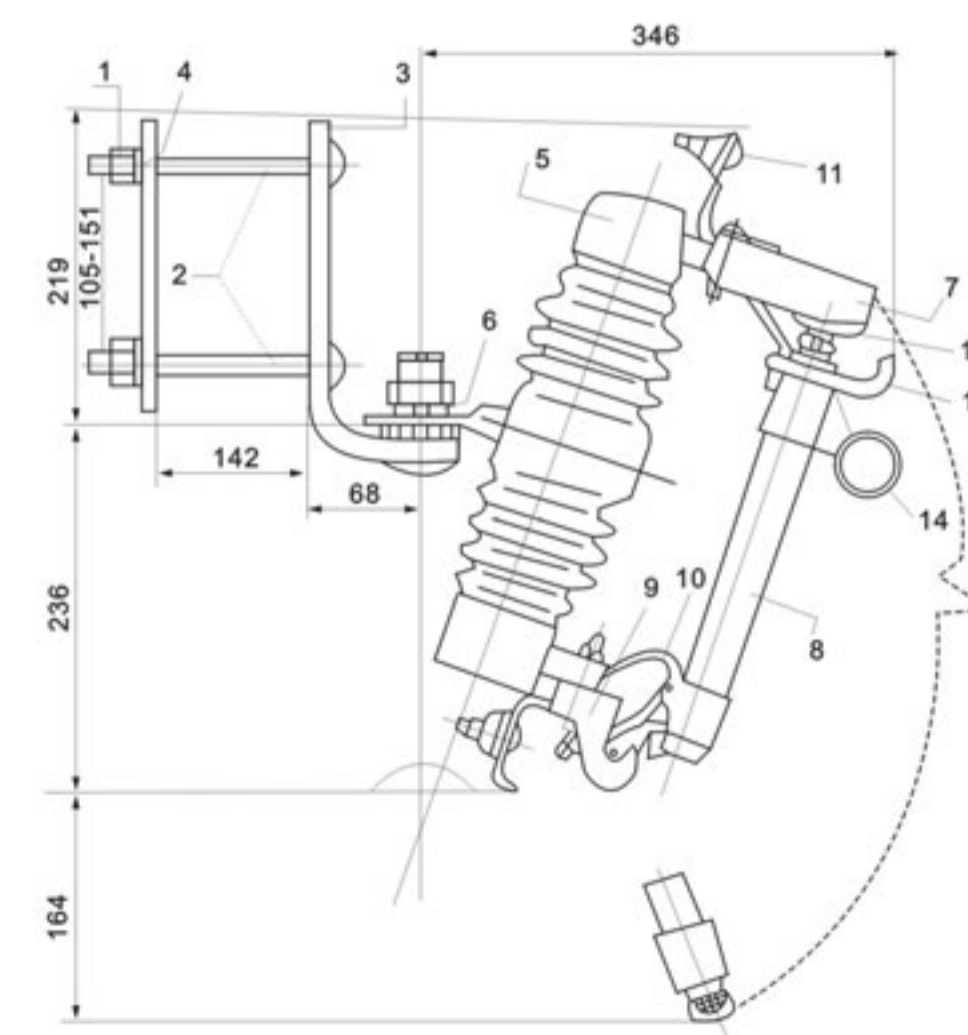
跌落式熔断器及拉负荷跌落式熔断器是户外高压保护电器。它装置在配电变压器高压侧或配电线支干线路上，用作变压器和线路的短路、过载保护及分、合负荷电流。跌落式熔断器由绝缘支架和熔丝管二部分组成，静触头安装在绝缘支架两端，动触头安装在熔丝管两端，熔丝管由内层的消弧管和外层环氧树脂管组成。拉负荷跌落式熔断器增加弹性辅助触头及灭弧罩，用以分、合负荷电流。跌落式熔断器在正常运行时，熔丝管借助熔丝张紧后形成闭合位置。当系统发生故障时，故障电流使熔丝迅速熔断，并形成电弧，消弧管受电弧灼热，分解出大量的气体，使管内形成很高压力，并沿管道形成纵吹，电弧被迅速拉长而熄灭。熔断丝断后，下部动触头失去张力而下翻，锁紧机构释放熔断丝，熔断丝跌落，形成明显的断开位置，当需要拉负荷时，用绝缘杆开启动触头，此时主动、静触头仍然接触，继续用绝缘杆拉动触头，辅助触头也分离，在辅助触头之间产生电弧，电弧在灭弧罩狭缝中被拉长，同时灭弧罩产生气体，在电流过零时，将电流熄灭。

Drop-out fuse cutout and load switching fuse cutout are of outdoor used high voltage protective device, To be connect with incoming feeder of distribution transformer or distribution lines, it mainly protect transformer or lines from short circuit and overload, and on/off loading, current, Drop-out fuse cutout is composed of insulator supports and fuse tube, static contacts is fixed on two sides of insulator support and moving contact is installed on two ends of fuse tube, Fuse tube is composed of inside arc-extinguishing tube. Outer phenolic compound paper tube or epoxy glass tube, Load switching fuse cutout provides enforced elastic auxiliary contacts and arc-extinguishing enclosure for switching on/off loading current.

At normally working via fuselink tightened the fuse tube is fixed to form up of close position, In case system occur faults, fault current result in fuse melt immediately and take piece electric arc, which let arc-extinguishing tube being heated and explode a lot of gas, This will produce high pressure and below of the arc along with tube, After fuselink melt moving contact has no tightened strength again, mechanism locked and fuse tube drop out, Cutout now is in open position, When it needs to switch off during cutout loading, operator shall via insulating operating bar pull the moving contact, at its beginning main contact and auxiliary static contact is contacted still, While pulling the auxiliary contact is separated between auxiliary contacts there occur electric arc and the arc will be lengthened in arc-extinguishing enclosure gap and meanwhile arc-extinguishing gas to blow off the arc during current passing zero

Detail drawing with accessories

编号No.	部件名称 Description
1	螺母 Nut
2	螺杆 Long Bolts
3	安装支架 I Mounting Bracket I
4	安装支架 II Mounting Bracket II
5	瓷件 Porcelain Insulator
6	弹簧垫圈 Spring Washer
7	上盖槽 One-piece channel
8	熔管 Fuse tube
9	下支座 Lower Socket
10	下触头 Lower contacts
11	接线座 Connector
12	上触头 Upper Contacts
13	导向钩 Attachment hooks
14	操作环 Operation Ring



C300 Fuse cut-out High voltage series

Parallel-groove connector tinplated casted brass. For ease of conductor connection, accommodates two conductors of unlike size in a single connector. Other styles of connectors are also available.

Birdproof-design insulator higher insulation characteristics than ANSI distribution cutout standards

Trunnion high-strength cast bronze, silver plated. Surfaces around trunnion bear on broad hinge surfaces to keep tube in alignment during closing

Fuse tube features MultiWind™-liner that virtually impervious to water ingress. Special UV-resistant finish assures long life. Models also available with disconnect blade

Toggle joint assures reliable dropout after operation

trunnion pocket secures tube in hinge during closing

Flipper gives high-speed terminal separation, quick cable flip-out, and (in conjunction with the toggle joint) reduces transmission of forces to fuse link during closing

Extra-Heavy-Drty Overhead-Pole-Top Style, rated 25kV nominal, 27kV maximum, 125kV BIL, 100 amperes continuous, 12,000 amperes interrupting RMS asymmetrical, 11 inches (279mm) minimum leakage distance to ground.

Catalog Number Suffix "-D" provides for the inclusion of parallel-groove connectors each accommodating No. 6 solid through No. 2st stranded copper or aluminum in one groove; No. 2 solid through 250kc mil stranded copper or aluminum, or 4/0ACSR in the other groove.

One-piece channel heavy galvanized steel (which is also used for inserts, hangers and structural bolts and nuts)

Upper contacts silver-to-silver; stainless-steel spring provides high contact pressure

Rugged attachment hooks for Loadbuster-guide tube during closing

Lower contacts (not visible)-silver-to-silver; provide dual current path, independent of hangers pivot. Stainless-steel backup springs prevent arcing when tube uses in hinge during recoil.

Sturdy ferrules Pinned to top and bottom of tube for permanent alignment. Either the large, accessible lifting ring or the keyhole (not visible in photo) may be engaged with a hookstick for secure control of fuse tube during fuse-tube installation or removal

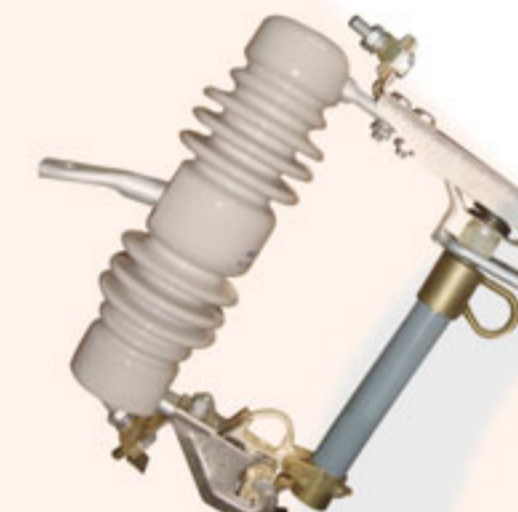
This document is property of CROP Technology Group Ltd. It is not allowed to send, duplicate or edit this document without written permission of CROP

C300 Fuse cut-out High voltage series

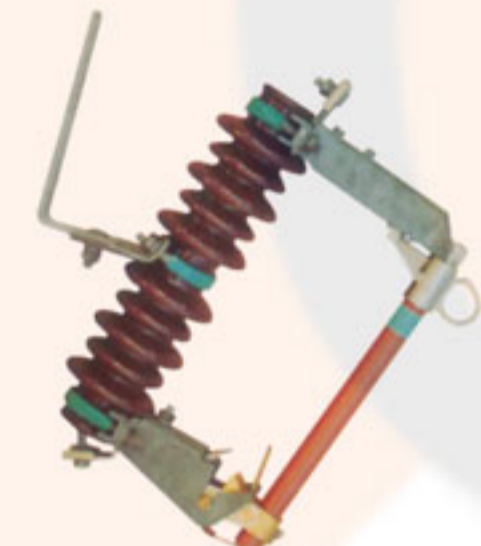
• 主要技术参数 Main technical parameters



10KV-15KV



12KV-15KV



11KV-15KV



10KV-15KV

型号 Type	RLF-1	RLF-1
额定电压 Rated Voltage(kV)	10-15	10-15
额定电流 Rated current(A)	100	200
开断电流 Breaking current(A)	10,000	12,000
冲击电压 Impulse voltage(kV)	110	110
工频耐压 Power-frequency withstand voltage(kV)	42	42
爬距 Creepage distance(mm)	250	250
重量 Weight(kg)	7.0	7.0
外形尺寸 Dimensions(CM)	38.5×34.5×10.5	38.5×34.5×10.5

型号 Type	RLF-2	RLF-2
额定电压 Rated Voltage(kV)	10-15	10-15
额定电流 Rated current(A)	100	200
开断电流 Breaking current(A)	10,000	12,000
冲击电压 Impulse voltage(kV)	110	110
工频耐压 Power-frequency withstand voltage(kV)	40	40
爬距 Creepage distance(mm)	250	250
重量 Weight(kg)	7.0	7.0
外形尺寸 Dimensions(CM)	38.5×34.5×10.5	38.5×34.5×10.5

型号 Type	RLF-3	RLF-3
额定电压 Rated Voltage(kV)	10-15	10-15
额定电流 Rated current(A)	100	200
开断电流 Breaking current(A)	6,000	8,000
冲击电压 Impulse voltage(kV)	110	110
工频耐压 Power-frequency withstand voltage(kV)	40	40
爬距 Creepage distance(mm)	340	340
重量 Weight(kg)	7.5	7.5
外形尺寸 Dimensions(CM)	49×27×11	49×27×11

型号 Type	RLF-4	RLF-4
额定电压 Rated Voltage(kV)	10-15	10-15
额定电流 Rated current(A)	100	200
开断电流 Breaking current(A)	10,000	12,000
冲击电压 Impulse voltage(kV)	110	110
工频耐压 Power-frequency withstand voltage(kV)	40	40
爬距 Creepage distance(mm)	260	260
重量 Weight(kg)	7.5	7.5
外形尺寸 Dimensions(CM)	48.5×44×13.5	48.5×44×13.5

This document is property of CROP Technology Group Ltd. It is not allowed to send, duplicate or edit this document without written permission of CROP

C300 Fuse cut-out High voltage series

• 主要技术参数 Main technical parameters



15KV-27KV

型号 Type	RLF-5	RLF-5
额定电压 Rated Voltage(kV)	15-27	15-27
额定电流 Rated current(A)	100	200
开断电流 Breaking current(A)	10000	12000
冲击电压 Impulse voltage(kV)	125	125
工频耐压 Power-frequency withstand voltage(kV)	45	45
爬距 Creepage distance(mm)	355	355
重量 Weight(kg)	8.8	8.8
外形尺寸 Dimensions(CM)	51.5×34×12	51.5×34×12



15KV-27KV

型号 Type	RLF-6	RLF-6
额定电压 Rated Voltage(kV)	15-27	15-27
额定电流 Rated current(A)	100	200
开断电流 Breaking current(A)	10000	12000
冲击电压 Impulse voltage(kV)	125	125
工频耐压 Power-frequency withstand voltage(kV)	45	45
爬距 Creepage distance(mm)	350	350
重量 Weight(kg)	8.5	8.5
外形尺寸 Dimensions(CM)	48×35×10.5	48×35×10.5



15KV-27KV

型号 Type	RLF-7	RLF-7
额定电压 Rated Voltage(kV)	15-27	15-27
额定电流 Rated current(A)	100	200
开断电流 Breaking current(A)	10000	12000
冲击电压 Impulse voltage(kV)	250	125
工频耐压 Power-frequency withstand voltage(kV)	45	45
爬距 Creepage distance(mm)	350	350
重量 Weight(kg)	8.5	8.5
外形尺寸 Dimensions(CM)	45×34.5×12	45×34.5×12



10KV-15KV

型号 Type	RLF-1	RLF-1
额定电压 Rated Voltage(kV)	10-15	10-15
额定电流 Rated current(A)	100	200
开断电流 Breaking current(A)	10,000	12,000
冲击电压 Impulse voltage(kV)	110	110
工频耐压 Power-frequency withstand voltage(kV)	42	42
爬距 Creepage distance(mm)	250	250
重量 Weight(kg)	7.3	7.3
外形尺寸 Dimensions(CM)	38.5×34.5×10.5	38.5×34.5×10.5

C300 Fuse cut-out High voltage series

• 主要技术参数 Main technical parameters



24KV-27KV

型号 Type	RLF-9	RLF-9
额定电压 Rated Voltage(kV)	24-27	24-27
额定电流 Rated current(A)	100	200
开断电流 Breaking current(A)	8,000	10,000
冲击电压 Impulse voltage(kV)	150	150
工频耐压 Power-frequency withstand voltage(kV)	65	65
爬距 Creepage distance(mm)	505	505
重量 Weight(kg)	12	12
外形尺寸 Dimensions(CM)	48×34.5×14	48×34.5×14



24KV-27KV

型号 Type	RLF-10	RLF-10
额定电压 Rated Voltage(kV)	24-27	24-27
额定电流 Rated current(A)	100	100
开断电流 Breaking current(A)	8,000	8,000
冲击电压 Impulse voltage(kV)	150	150
工频耐压 Power-frequency withstand voltage(kV)	65	65
爬距 Creepage distance(mm)	540	540
重量 Weight(kg)	12	12
外形尺寸 Dimensions(CM)	49×35×14	49×35×14



24KV-27KV

型号 Type	RLF-11	RLF-11
额定电压 Rated Voltage(kV)	24	24
额定电流 Rated current(A)	100	200
开断电流 Breaking current(A)	10,000	12,000
冲击电压 Impulse voltage(kV)	150	150
工频耐压 Power-frequency withstand voltage(kV)	65	65
爬距 Creepage distance(mm)	540	540
重量 Weight(kg)	4.5	4.5
外形尺寸 Dimensions(CM)	51×34×11.5	51×34×11.5



12KV-15KV

型号 Type	RLF-12	RLF-12
额定电压 Rated Voltage(kV)	15	15
额定电流 Rated current(A)	100	200
开断电流 Breaking current(A)	10,000	12,000
冲击电压 Impulse voltage(kV)	110	110
工频耐压 Power-frequency withstand voltage(kV)	45	45
爬距 Creepage distance(mm)	245	245
重量 Weight(kg)	3.8	3.8
外形尺寸 Dimensions(CM)	45×34×11.5	45×34×11.5

C300 Fuse cut-out High voltage series

• 主要技术参数 Main Technical Parameters



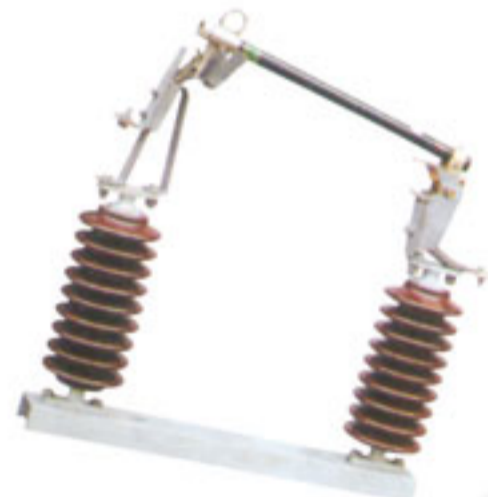
33KV-36KV

型号 Type	RLF-13	RLF-13
额定电压 Rated Voltage(kV)	33	33
额定电流 Rated current(A)	100	200
开断电流 Breaking current(A)	6,000	8,000
冲击电压 Impulse voltage(kV)	170	170
工频耐压 Power-frequency withstand voltage(kV)	70	70
爬距 Creepage distance(mm)	660	660
重量 Weight(kg)	15	15
外形尺寸 Dimensions(CM)	56×38×14.5	56×38×14.5



33KV-36KV

型号 Type	RLF-14	RLF-14
额定电压 Rated Voltage(kV)	36	36
额定电流 Rated current(A)	100	200
开断电流 Breaking current(A)	10,000	12,000
冲击电压 Impulse voltage(kV)	170	170
工频耐压 Power-frequency withstand voltage(kV)	70	70
爬距 Creepage distance(mm)	720	720
重量 Weight(kg)	15.5	15.5
外形尺寸 Dimensions(CM)	63×38×14.5	63×38×14.5



33KV-36KV

型号 Type	RLF-15	RLF-15
额定电压 Rated Voltage(kV)	33	33
额定电流 Rated current(A)	100	200
开断电流 Breaking current(A)	8,000	10,000
冲击电压 Impulse voltage(kV)	170	170
工频耐压 Power-frequency withstand voltage(kV)	70	70
爬距 Creepage distance(mm)	820	820
重量 Weight(kg)	27.5	27.5
外形尺寸 Dimensions(CM)	68×17×15	68×17×15



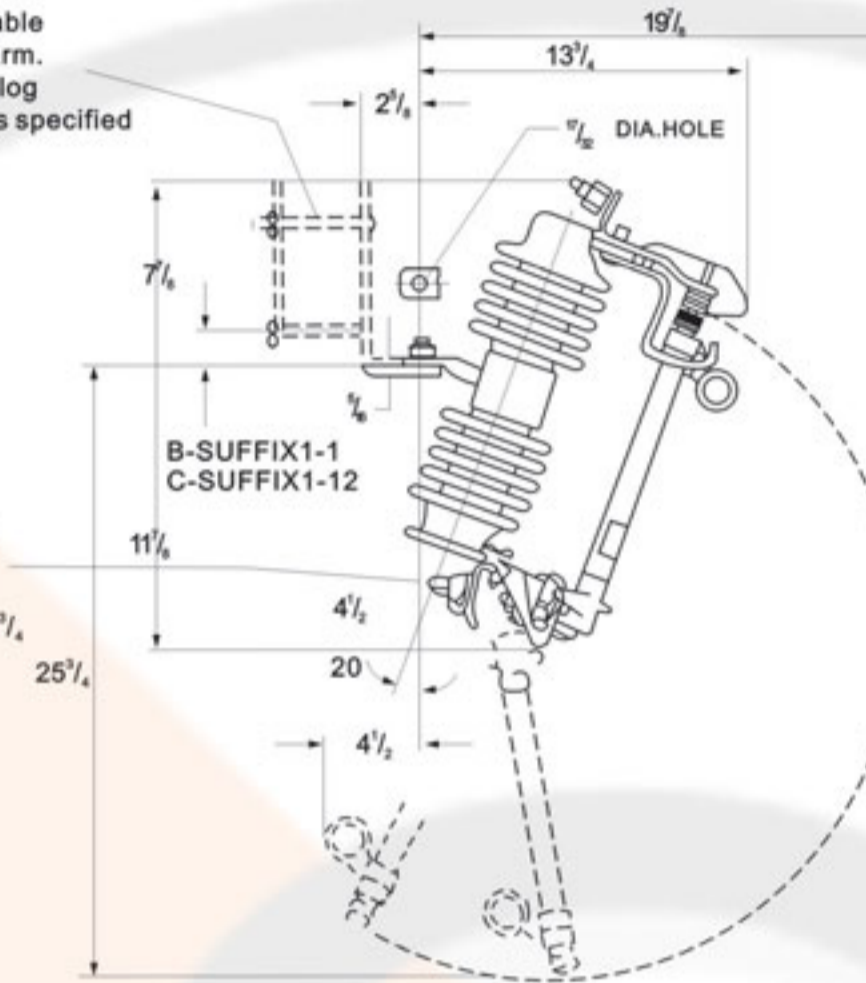
33KV-36KV

型号 Type	RLF-16	RLF-16
额定电压 Rated Voltage(kV)	36	36
额定电流 Rated current(A)	100	200
开断电流 Breaking current(A)	10,000	12,000
冲击电压 Impulse voltage(kV)	170	170
工频耐压 Power-frequency withstand voltage(kV)	70	70
爬距 Creepage distance(mm)	720	720
重量 Weight(kg)	5	5
外形尺寸 Dimensions(CM)	61×34×11.5	61×34×11.5

C300 Fuse cut-out High voltage series

Mounting bracket, Adjustable
For 3" x 4" to 4" x 5" crossarm.
Furnished only when catalog
Number suffix "B" or "C" is specified

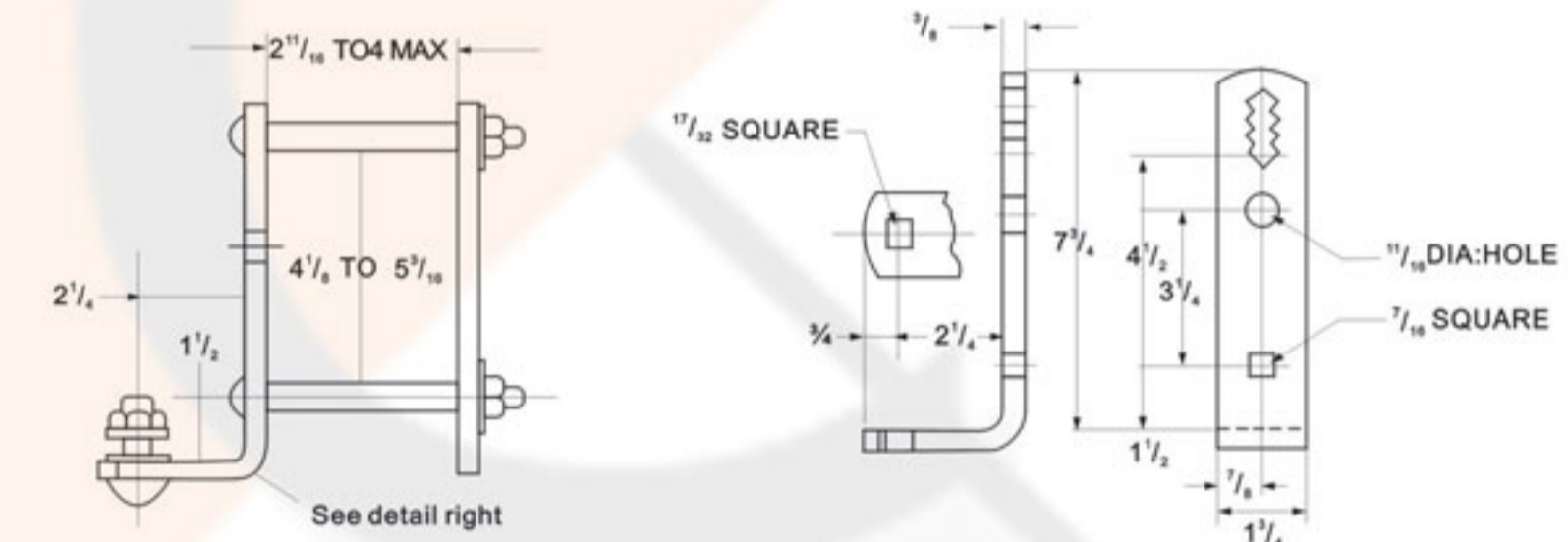
Optional parallel
Groove connector shown
Furnished only when
Catalog number
Suffix "d" is specified 25 1/4



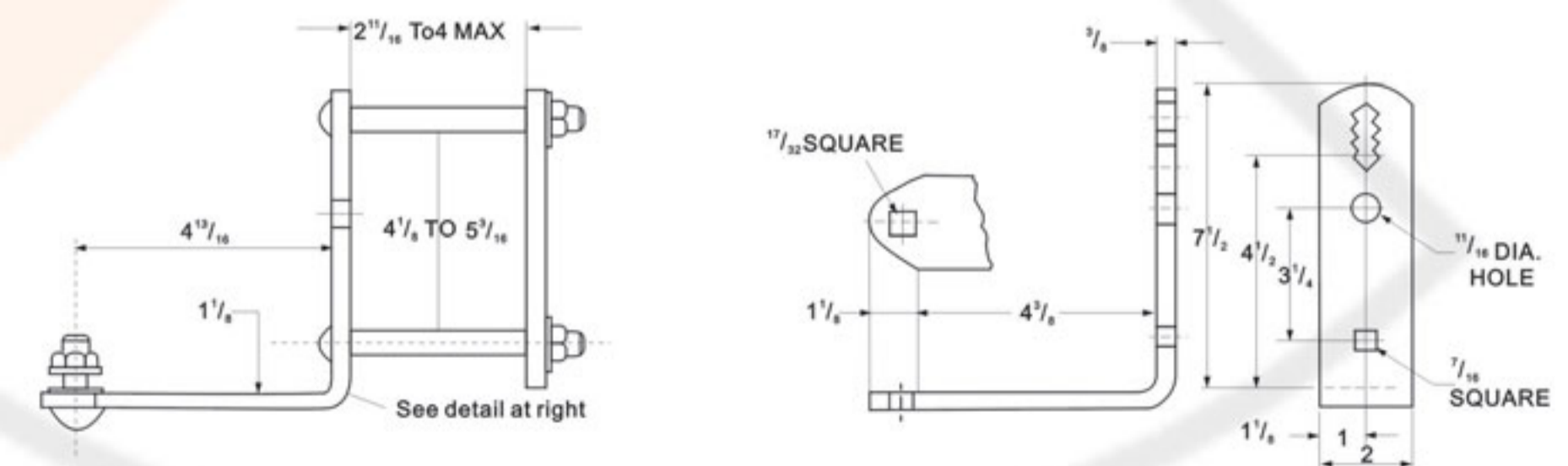
Note:
*Add connector suffix per table 1.
*Dimension shown is for "C" suffix (name "B" bracket.)
Dimension is 53/16 for "B" suffix fuerte extended bracket.
"D" suffix only.

Table 1 Connector suffix		
Type connector	wire size	Catalog no. suffix
Parallel groove	Number solid cu. thru 250KC will stand cu. or 4/0 acsr	-D
Eye bolt	No. 6 solid cu. thru 2/0 stand cu. or al.	-J
Eye bolt	No. 6 solid cu. thru 250KC will stand cu. or 4/0 acsr	-M

Table 2					
Style	Rating			Leakage distance to gro. Minum inches	
	Catalog	KV. Nom	BIL Amps		
Extra heavy duty	RTF	25 150	100	-D	
ultra heavy duty	RTF	25 150	100	-J	
Heavy duty	RTF	14.4 150	100	-M	



NEMA Type B Mounting Bracket-Adjustable for 3" x 4" to 4" x 5" Crossarm



Extended Mounting Bracket-Adjustable for 4" x 4" to 4" x 5" Crossarm

C300 Fuse cut-out High voltage series

• 主要技术参数 Main technical parameters



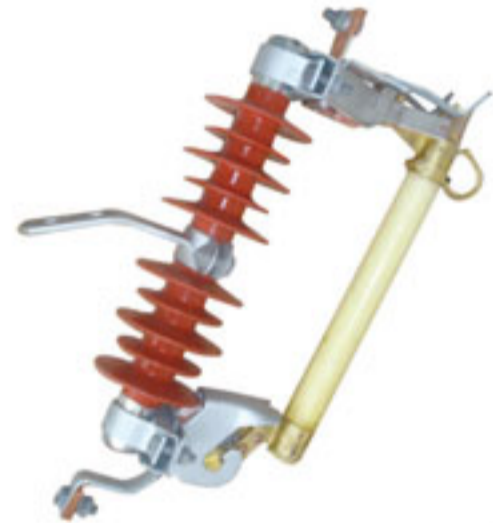
10KV-15KV

型号 Type	RW20	RW20
额定电压 Rated Voltage(kV)	12	12
额定电流 Rated current(A)	100	200
开断电流 Breaking current(A)	1,000	1,200
冲击电压 Impulse voltage(kV)	110	110
工频耐压 Power-frequency withstand voltage(kV)	42	42
爬距 Creepage distance(mm)	245	245
重量 Weight(kg)	5.9	5.9
外形尺寸 Dimensions(CM)	38.5×34.5×11	38.5×34.5×11



10KV-15KV

型号 Type	RW11	RW11
额定电压 Rated Voltage(kV)	12	12
额定电流 Rated current(A)	100	200
开断电流 Breaking current(A)	6,300	8,000
冲击电压 Impulse voltage(kV)	100	110
工频耐压 Power-frequency withstand voltage(kV)	42	42
爬距 Creepage distance(mm)	230	230
重量 Weight(kg)	7.8	7.8
外形尺寸 Dimensions(CM)	48×15×31	48×15×31



10KV-15KV

型号 Type	RW11	RW11
额定电压 Rated Voltage(kV)	12	12
额定电流 Rated current(A)	100	200
开断电流 Breaking current(A)	6,300	8,000
冲击电压 Impulse voltage(kV)	100	110
工频耐压 Power-frequency withstand voltage(kV)	42	42
爬距 Creepage distance(mm)	350	350
重量 Weight(kg)	3.8	3.8
外形尺寸 Dimensions(CM)	48×15×31	48×15×31



10KV-15KV

型号 Type	RRWG1	RRWG1
额定电压 Rated Voltage(kV)	12	12
额定电流 Rated current(A)	100	200
开断电流 Breaking current(A)	6,300	8,000
冲击电压 Impulse voltage(kV)	100	110
工频耐压 Power-frequency withstand voltage(kV)	42	42
爬距 Creepage distance(mm)	350	350
重量 Weight(kg)	8.8	8.8
外形尺寸 Dimensions(CM)	61×13×42	61×13×42

C300 Fuse cut-out High voltage series

• 主要技术参数 Main technical parameters



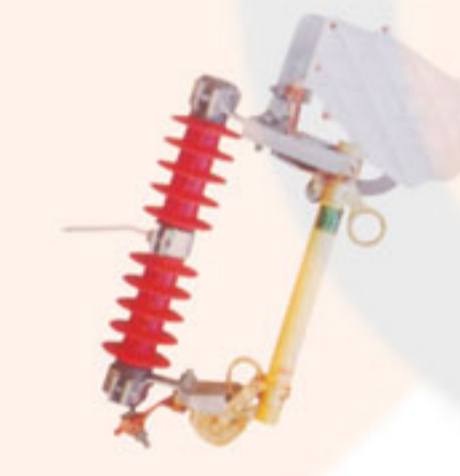
10KV-15KV

型号 Type	RW10(W)	RW10(W)
额定电压 Rated Voltage(kV)	12	12
额定电流 Rated current(A)	100	200
开断电流 Breaking current(A)	6,300	8,000
冲击电压 Impulse voltage(kV)	110	110
工频耐压 Power-frequency withstand voltage(kV)	42	42
爬距 Creepage distance(mm)	360	360
重量 Weight(kg)	8.5	8.5
外形尺寸 Dimensions(CM)	56×13×12	56×13×12



10KV-15KV

型号 Type	RW10-10F	RW10-10F
额定电压 Rated Voltage(kV)	12	12
额定电流 Rated current(A)	100	200
开断电流 Breaking current(A)	6,300	8,000
冲击电压 Impulse voltage(kV)	110	110
工频耐压 Power-frequency withstand voltage(kV)	42	42
爬距 Creepage distance(mm)	245	245
重量 Weight(kg)	6.2	6.2
外形尺寸 Dimensions(CM)	53×32×12	53×32×12



10KV-15KV

型号 Type	HRW10	HRW10
额定电压 Rated Voltage(kV)	12	12
额定电流 Rated current(A)	100	200
开断电流 Breaking current(A)	6,300	8,000
冲击电压 Impulse voltage(kV)	110	110
工频耐压 Power-frequency withstand voltage(kV)	42	42
爬距 Creepage distance(mm)	350	350
重量 Weight(kg)	3.8	3.8
外形尺寸 Dimensions(CM)	42×35×11	42×35×11



35KV

型号 Type	RW10-35	RW10-35
额定电压 Rated Voltage(kV)	35	35
额定电流 Rated current(A)	100	200
开断电流 Breaking current(A)	8,000	10,000
冲击电压 Impulse voltage(kV)	170	170
工频耐压 Power-frequency withstand voltage(kV)	70	70
爬距 Creepage distance(mm)	820	820
重量 Weight(kg)	24.5	24.5
外形尺寸 Dimensions(CM)	68×17×15	68×17×15

C300 Fuse cut-out High voltage series

• 主要技术参数 Main technical parameters



35KV

型号 Type	PRWG2	PRWG2
额定电压 Rated Voltage(kV)	35	35
额定电流 Rated current(A)	100	200
开断电流 Breaking current(A)	6,300	8,000
冲击电压 Impulse voltage(kV)	170	170
工频耐压 Power-frequency withstand voltage(kV)	70	70
爬距 Creepage distance(mm)	870	870
重量 Weight(kg)	16	16
外形尺寸 Dimensions(CM)	90×40×13	90×40×13



35KV

型号 Type	PRWG2	PRWG2
额定电压 Rated Voltage(kV)	35	35
额定电流 Rated current(A)	100	200
开断电流 Breaking current(A)	6,300	8,000
冲击电压 Impulse voltage(kV)	170	170
工频耐压 Power-frequency withstand voltage(kV)	70	70
爬距 Creepage distance(mm)	870	870
重量 Weight(kg)	16	16
外形尺寸 Dimensions(CM)	90×40×13	90×40×13



10KV-15KV

型号 Type	RW3	RW3
额定电压 Rated Voltage(kV)	10	10
额定电流 Rated current(A)	100	200
开断电流 Breaking current(A)	6,300	8,000
冲击电压 Impulse voltage(kV)	100	110
工频耐压 Power-frequency withstand voltage(kV)	42	42
爬距 Creepage distance(mm)	2300	2300
重量 Weight(kg)	6.3	6.3
外形尺寸 Dimensions(CM)	48×27×12	48×27×12



10KV-15KV

型号 Type	RW7	RW7
额定电压 Rated Voltage(kV)	10	10
额定电流 Rated current(A)	100	200
开断电流 Breaking current(A)	6,300	8,000
冲击电压 Impulse voltage(kV)	110	110
工频耐压 Power-frequency withstand voltage(kV)	42	42
爬距 Creepage distance(mm)	230	230
重量 Weight(kg)	6.2	6.2
外形尺寸 Dimensions(CM)	48×27×12	48×27×12

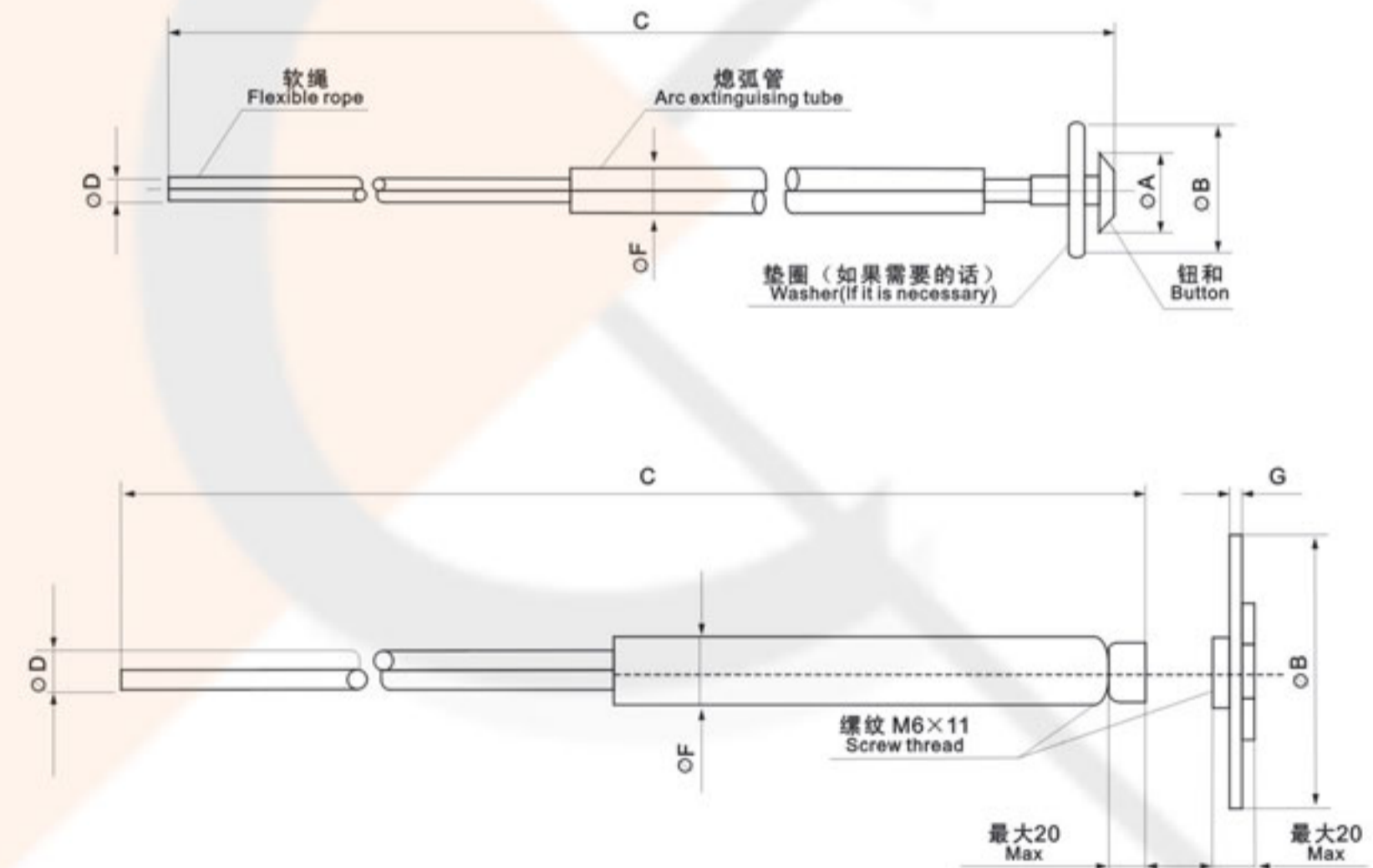
This document is property of CROP Technology Group Ltd. It is not allowed to send, duplicate or edit this document without written permission of CROP

C300 Fuse cut-out High voltage series

• "KB、KU、KS" 型熔丝 "KB、KU、KS" FUSELINK

属“K”“T”型熔丝根据IEC-282标准，有普通式、万能式、螺纹式三种类型。此产品适用于11-36kV电压等级跌落式熔断器。“KB、KU、KS”型。

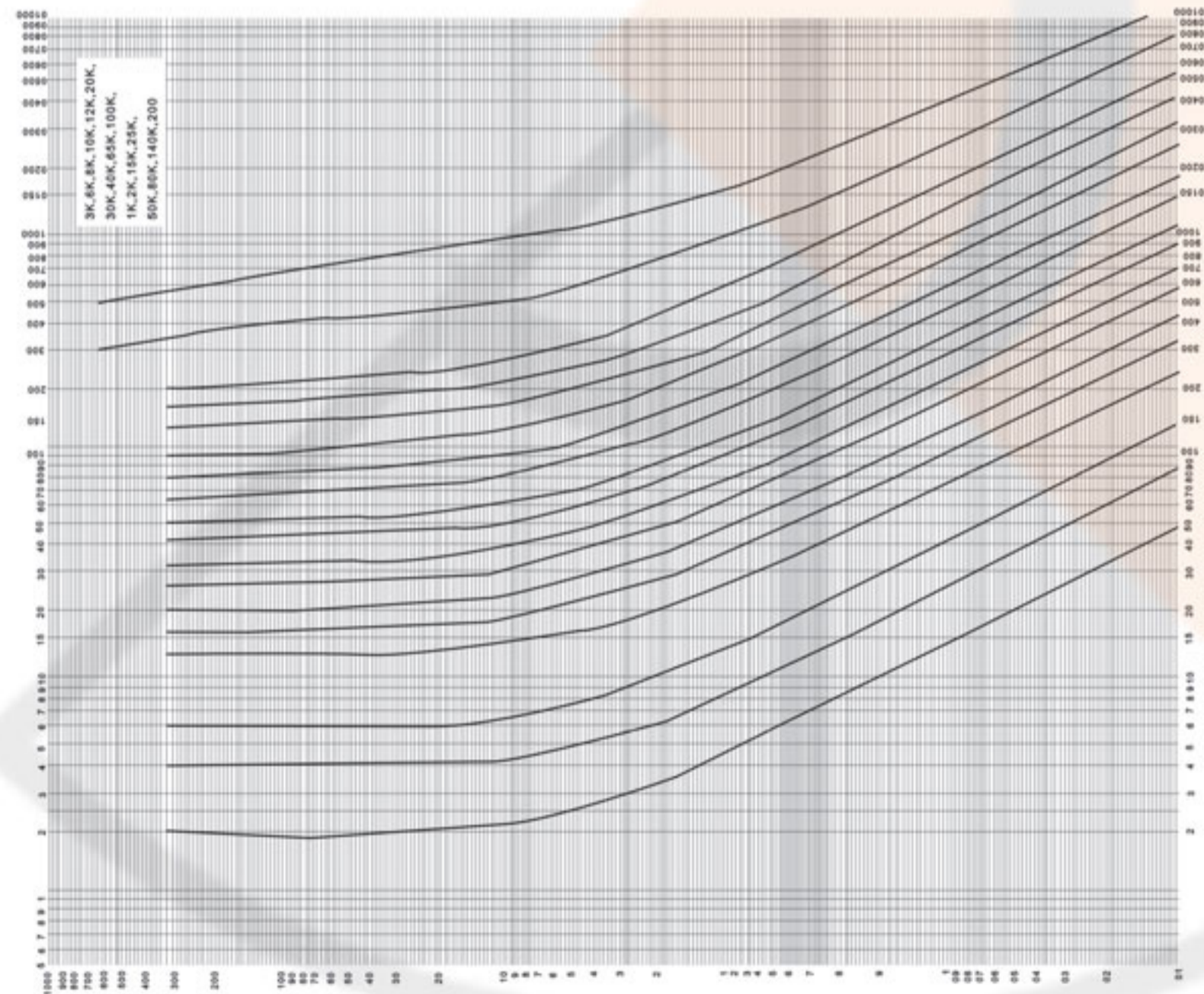
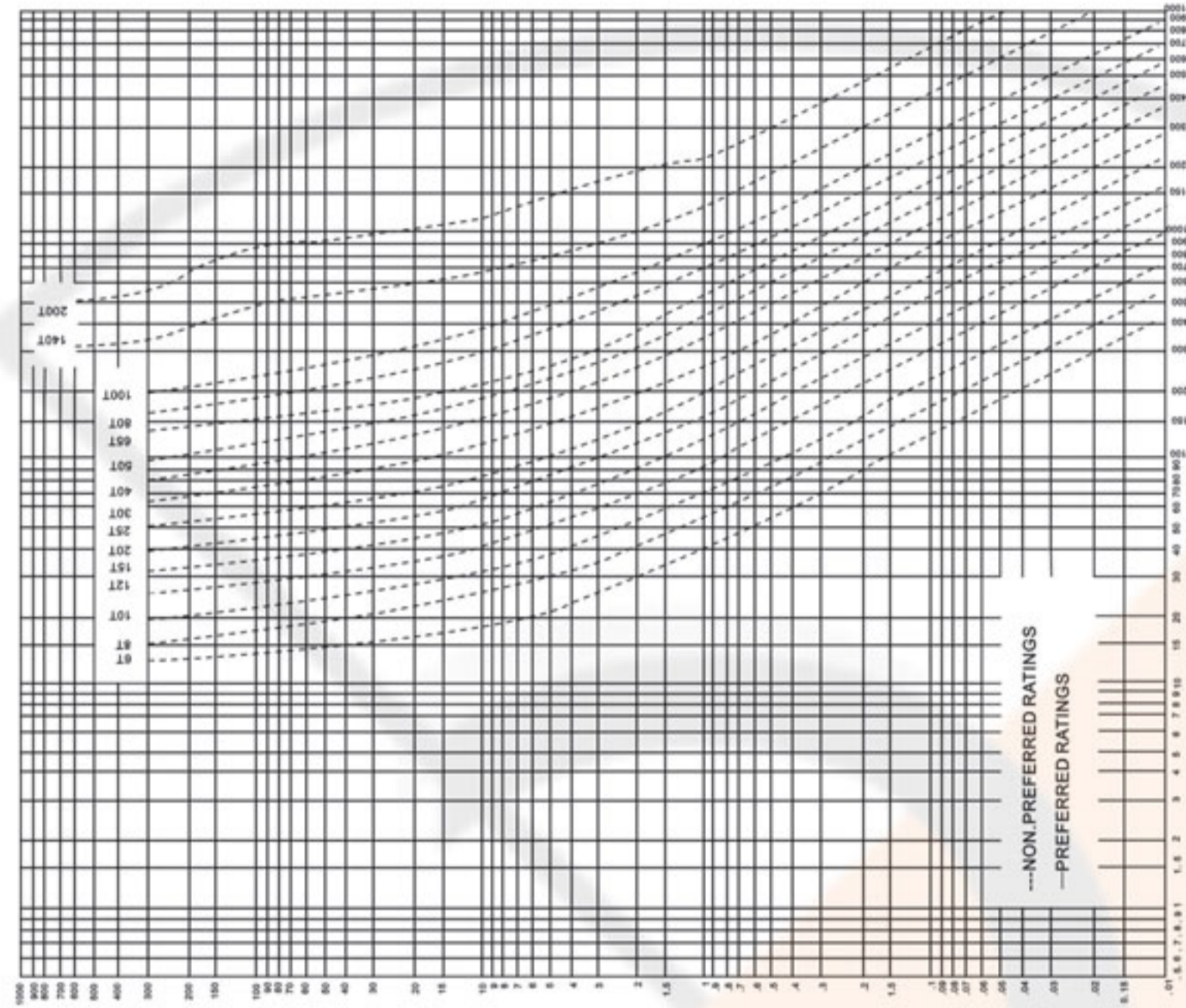
"KB.KU.KS" type fuses belong to "K" and "T" type fuses, it has general type, universal type and screw type available according to IEC-282 standard. The product drop-off type fuse of 11-36kV grade.



额定电流 Rated current(A)	尺寸 Dimension(mm)					数量/箱 Quantity/carton
	A	B	C	D	F	
1至(to)25	12.5±0.2	19.0±0.2	注 (Note) 1	2.0	6.5	500
30至(to)40	12.5±0.2	19.0±0.3	注 (Note) 1	3.0	8.0	500
50至(to)100	19.0±0.3	不适用 (Not applicable)	注 (Note) 1	5.0	10.0	250
140至(to)200	19.0±0.3	不适用 (Not applicable)	注 (Note) 1	7.0	12.0	150

This document is property of CROP Technology Group Ltd. It is not allowed to send, duplicate or edit this document without written permission of CROP

C300 Fuse cut-out High voltage series



This document is property of CROP Technology Group Ltd. It is not allowed to send, duplicate or edit this document without written permission of CROP

C300 Fuse cut-out High voltage tool

• Hook stick tools



HookStick, RLT portable loadbreak Tool

HookStick is first attached to a universal pole at least six feet long. It is then positioned across the front of the Type FSC Cutout, with the HookStick anchor hung on the attachment hook on the far side of the cutout. The pull ring of the fuse tube or disconnect blade is engaged with HookStick's pull-ring hook and held fast with HookStick's pull-ring of the fuse tube or disconnect blade is engaged with HookStick's pull-ring hook and held fast. HookStick's pull-ring latch. As the universal pole is pulled downward with a firm, steady stroke, and as HookStick is extended to its maximum length, the cutout is opened and the current is diverted through HookStick - at the same time HookStick's opening stroke, its internal trigger trips, the charged operating spring is released, the internal contact are separated, and the circuit is positively interrupted. The only sound is that of HookStick tripping.

Circuit interruption is independent of the speed at which the HookStick tool is operated. All that is required is a smooth operating stroke, without hesitation, without jerking, until the tool is extended to its maximum length. The resetting latch retains the tool in the open position for removal from the cutout - and until released to reset HookStick for its next operation.

And resetting HookStick is easy, too. Simply release the resetting latch and firmly close the extended tool to its fully telescoped position. It's that simple. For detailed information on HookStick, RIT's portable loadbreak tool, see FRT Descriptive Bulletin 811-30.

1. ATTACH

Reach across the front of the cutout and attach HookStick's anchor to the attachment hook on the far side of the cutout, and then engage its pull ring with HookStick's pull-ring hook.

HookStick's pull-ring latch prevents disengagement of the cutout pull ring and HookStick's pulling hook.

2. PULL

A firm, steady downward pull on HookStick - to its maximum extended length - opens the cutout in the normal manner as the current is diverted through HookStick. At a predetermined point in the opening stroke, HookStick trips, breaking the circuit positively.

3. REMOVE

HookStick is disengaged by first removing its anchor from the cutout attachment hook. Then with the blade in the open position, HookStick is removed from the pull ring with a simple "roll-off" motion.

This document is property of CROP Technology Group Ltd. It is not allowed to send, duplicate or edit this document without written permission of CROP